



For dry drilling in all wall and floor tiles. With hexagonal connection (6 to 12 mm) or M14 for the angle grinder (6 to 75 mm).



For wet drilling in all wall and floor tiles. To be used with regular cordless / battery drill.



Tile drill set dry with wax in diameters 6 (2x), 8 (2x) and 10mm with M14 connection. Other sets also available.



A.S.F. **FISCHER BV**  
PARTNER IN FASTENERS



### A selection from our product range



Scan the QR-Code for more than 50,000 articles in our webshop!



+31 (0)320 28 55 44

verkoop@asf-fischer.nl

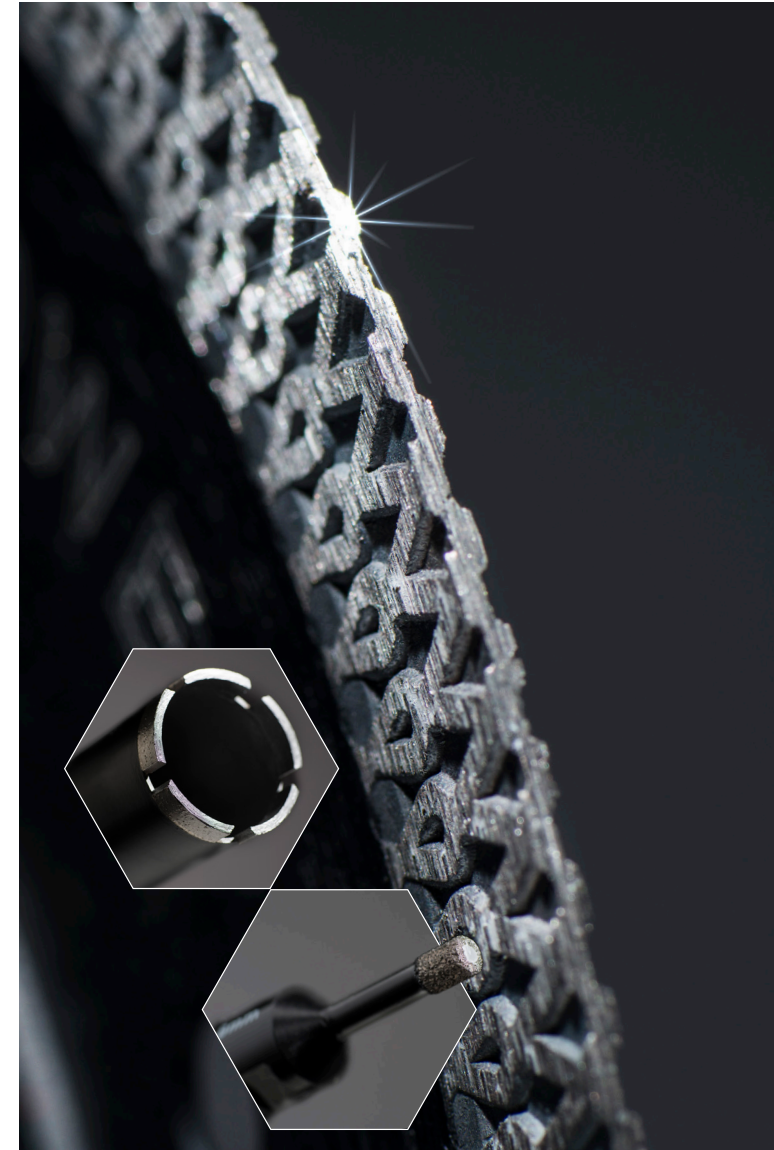
www.asf-fischer.nl  
www.webshop.asf-fischer.nl



A.S.F. **FISCHER BV** PARTNER IN FASTENERS  
www.asf-fischer.nl

# InterDynamics

DIAMOND PRODUCTS SPECIALIST



Partner in fasteners



### Universal

- Wet and dry cutting
- Almost all hard and medum-hard stone types
- Extensive product range



### Soft stone

- Wet and dry cutting
- Abrasive materials
- Soft types of stone



### Tiles

- Wet cutting (also dry cutting with 115 and 125mm)
- Wall and floor tiles, marble stone and natural stone
- Ideal for bathrooms and kitchens



### Special

- Wet and dry cutting
- Different types of cutting discs
- Plastic or Polychrystalline



### Metal

- Up to 50x longer life than traditional cutting discs
- Retains shape and speed
- Extra thin

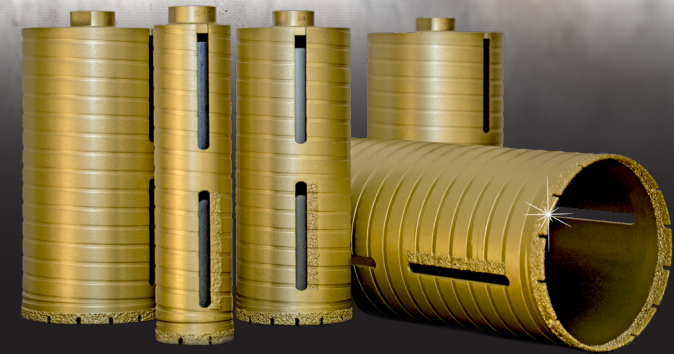


### Concrete

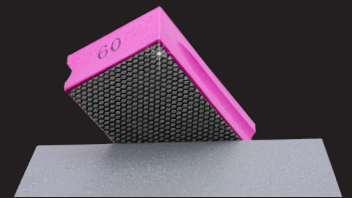
- Wet and dry cutting
- (Reinforced) Concrete, concrete stone, granite and other hard types of stone
- Extensive product range



## ALSO THE BEST FOR DRILLING HOLES



Diamond core drills with various connections and diameters ranging from 10 to 300 mm.



The diamond in the hand sanding blocks ensures a perfectly finished tile and a perfect tiling result. Ideal for processing and finishing corners, edges, straight and/or slightly curved surfaces.